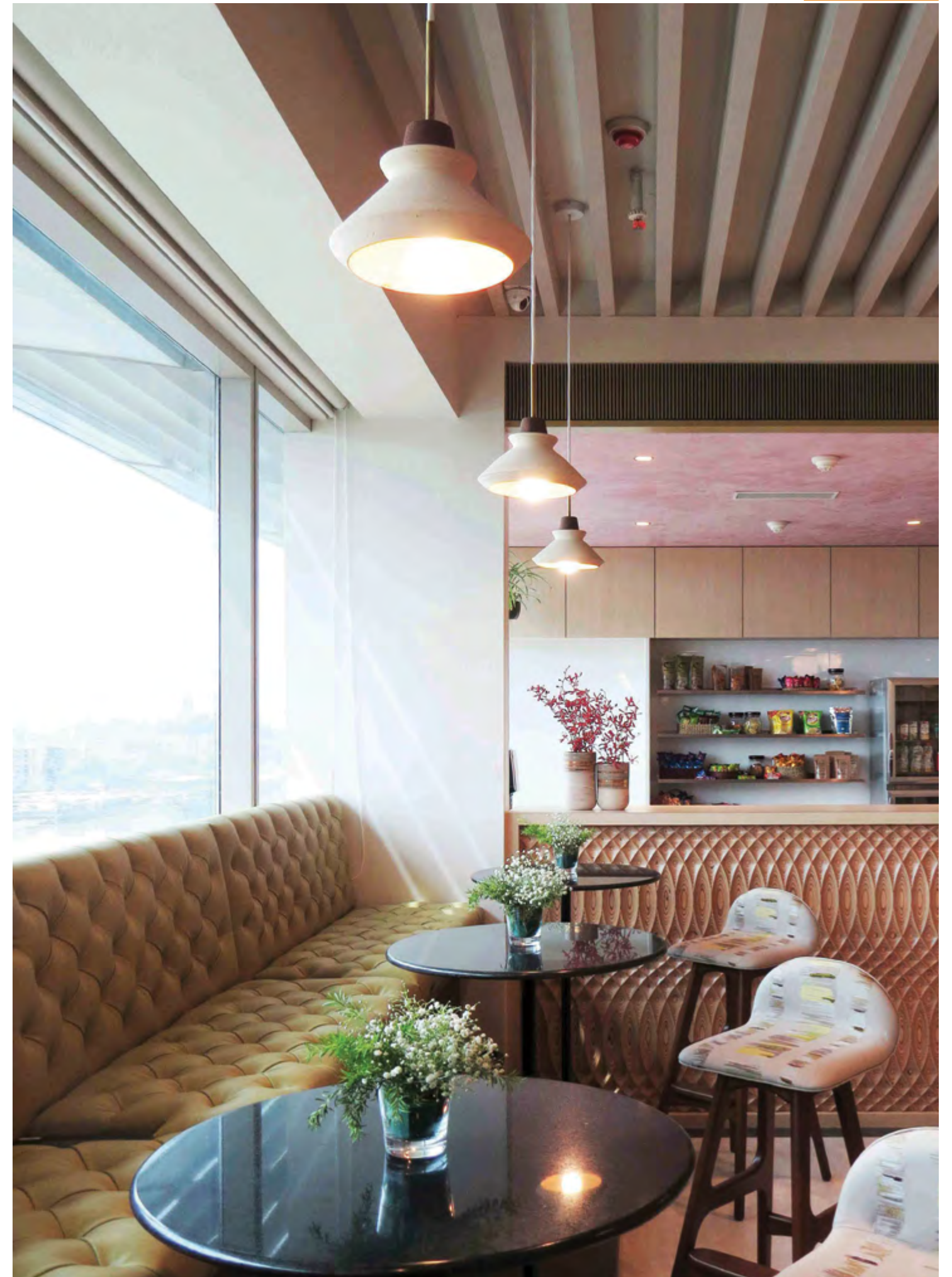




# Perfection & Positivity

With a tangible sense of surprise and freshness, this co-working space by Architects Robin Chhabra and Nishil Shah is a whole load of warmth and simplicity

Surrounding yourself with positive people and positive spaces is the need of the hour.. Nevertheless, premium shared spaces are a perfect work station and collaborative meetings for entrepreneurs. A work friendly environment, leads to high productivity. Networking zones are a culture more than a necessity and the right place to be is a co-working space. Similarly, designing a co-working space, is arduous. It caters to a population with different mindsets, expectations and a high energetic environment. More so, it's a combination of professional and personal preferences. Dextrus, a co-working space situated in Mumbai with a covered area of 15000 sq ft, is one such ambience that brings out the professional in you. The space co-designed by Architect and founder Robin Chhabra owns its own exclusivity. "The intention is to offer the client a sense of choice and, via that, a sense of ownership to the space at large," Robin explains. Effortlessly balancing utility and style, it offers all the things that matter — from acoustic excellence to tech infrastructure, packaged in a stylish architectural design that gives the workspace a sense of prestige and makes it a coveted address on the map of BKC, Mumbai. "Our first and foremost goal was to bring design thinking to the real estate space. Believe it or not, design is thought of as an aesthetic and not as a tool. We spend so much time in an office space, it should be well thought through" says Founder Robin Chhabra. The space is a combination of clear lines and vibrant colours. The pastel pink textured ceilings help bring a calmness, the green from the plants and the artwork helps bring vibrancy and a nice freshness to the space. "Keeping the exterior in mind, we always knew sunlight is a very important aspect and that the entire office space needs to have a connection with it. So, we used our public spaces to bring sunlight deep into the floor-plate. We designed our services in a way that allowed maximum heights in these areas giving the entire space a very positive vibe.," adds Architect Nishil Shah. Welcoming all visitors, the entrance differentiates itself by a huge light installation that spans the length of the corridor. Just below, the Dextrus logo sits atop a series of oak wood finished mail boxes, a design element, that gives the entrance a visual endurance.









The shared areas of Dextrus, being a workspace, acts as a key component of design. The common areas have a range of program such as a library space, cafeteria and snack market, lounges, phone booths, flexible desks etc. Conversations over coffee and food are a quintessential part of building community and fostering exchanges. To cater to these different needs and moods multiple ergonomic seating were specified. Along the window, an intimate high bar-style cushioned seating offers the views of both - the stunning office and the city outside. A sleek and fresh artistry is made with pistachio green leather sofa and light-coloured wood pattern against the white stone, quartz pink backdrop spruced up with potted green plants. The USP is the meeting room, Agora, with an expansive seating arrangement which can be used as a boardroom style or a theatre style. This comes in quite handy for the different requirements of clients. A good amount of flexibility is in built where the meeting rooms can be subdivided into smaller rooms depending on the demand. The same is equipped with high end technology. The conscious effort was not to have too many pure corridors, making it stereotypical rather create a large public space as it's easy to navigate. This allows for more interactions amongst the users which is quite vital in a coworking space. The lavatories are wheelchair accessible and made with a pop of colour to stand apart from the main space.







The furniture is a diverse mix put together considering different working and interaction postures in all kinds of situations. An array of soft and hard materials in soft pastel color palette of the furniture pieces enhances the quality of the office space. “We have specially shipped down ergonomic SteelCase chairs along with personal lockable storage for all the workstations, ensuring a good comfortable day at work,” says Nishil. Speaking further he adds, “Bringing together the skills of diverse artisans and craftsmen, the brief was to work within the parameters of a well-curated palette of materials and textures. Every detail and corner reflects the ingenuity and instinctive collaborative efforts of all who came on board.” In order to traditionalize a modern workspace with local heritage arts that showcase this concept of collaboration between multiple artisans and mixed materials. From fine miniature paintings that are a hallmark of Jaipur and pastel wooden dolls from Visakhapatnam, to sketches of the famous Patola weave and block printing, Dextrus showcases the essence of dexterity that is ingrained in our heritage.”While preparing the layout, the importance of architecture in the alignment of space and light was taken into consideration. Commenting on the same, Robin said, “The entire process of research was important for us as we had to understand what existed and how we could differentiate. We then spent a few months balancing our design with a sustainable financial model which was the most vital part of the process. Once we were confident of this, we moved towards construction.” Crafting a soothing, delicate and yet engaging environment in the office space and for that a clean and elegant material palette was essential. A seamless pearl grey marble is laid in the community areas whereas wooden flooring adds warmth to the private working areas. Acoustic ceilings were useful to keep a check on noise levels and maintain the privacy. The soft light grey baffles cover the public spaces and a calming and gender-neutral textured shade of quartz pink flaunt the corridors. Keeping pace with technology is paramount too and the Dextrus setup defines this.



- **Name of the project**  
Dextrus
- **Type of project**  
Coworking space/ Shared Workspace
- **Launch date**  
May 2018
- **Completion date**  
May 2018
- **Architects Name**  
Robin Chhabra (Founder and co-architect),  
Nishil Shah (co-architect)
- **Firms Name**  
ThirdAct Ventures
- **Location**  
A-802, Crescenzo, G Block, Bandra Kurla  
Complex, Mumbai, Maharashtra 400051
- **Area**  
15,000 Sq.ft
- **Text Courtesy**  
Harsha Masand